

Established 1925

KANSAS GEOLOGICAL SOCIETY

BULLETIN

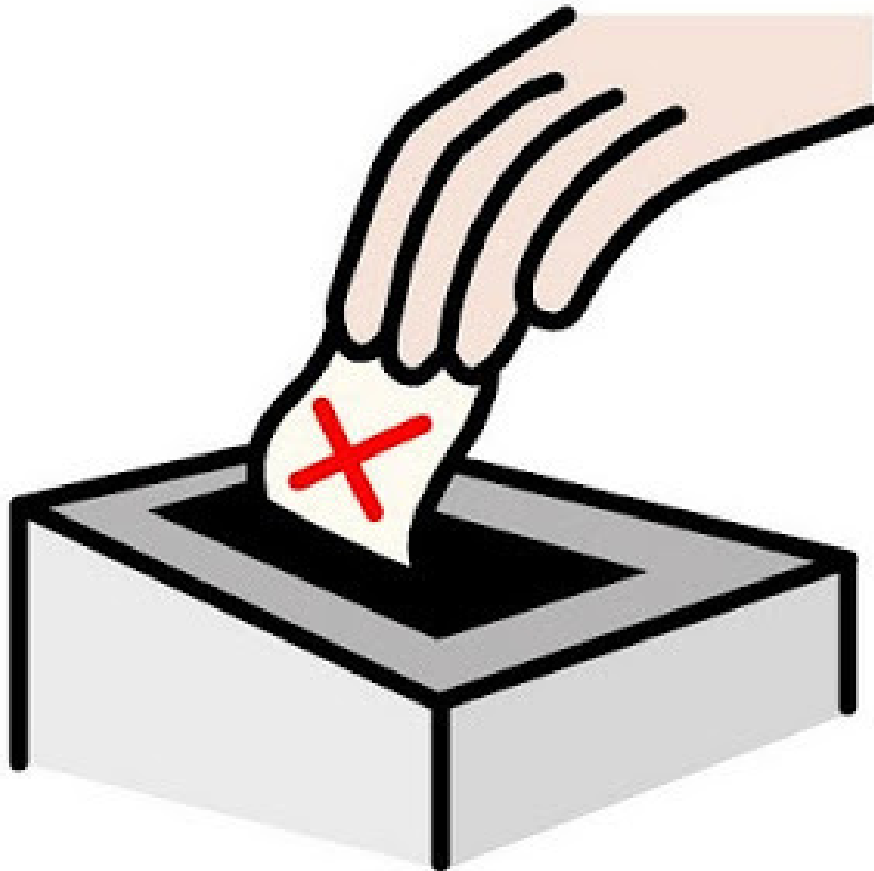
Volume 90 Number 6

November—December 2015

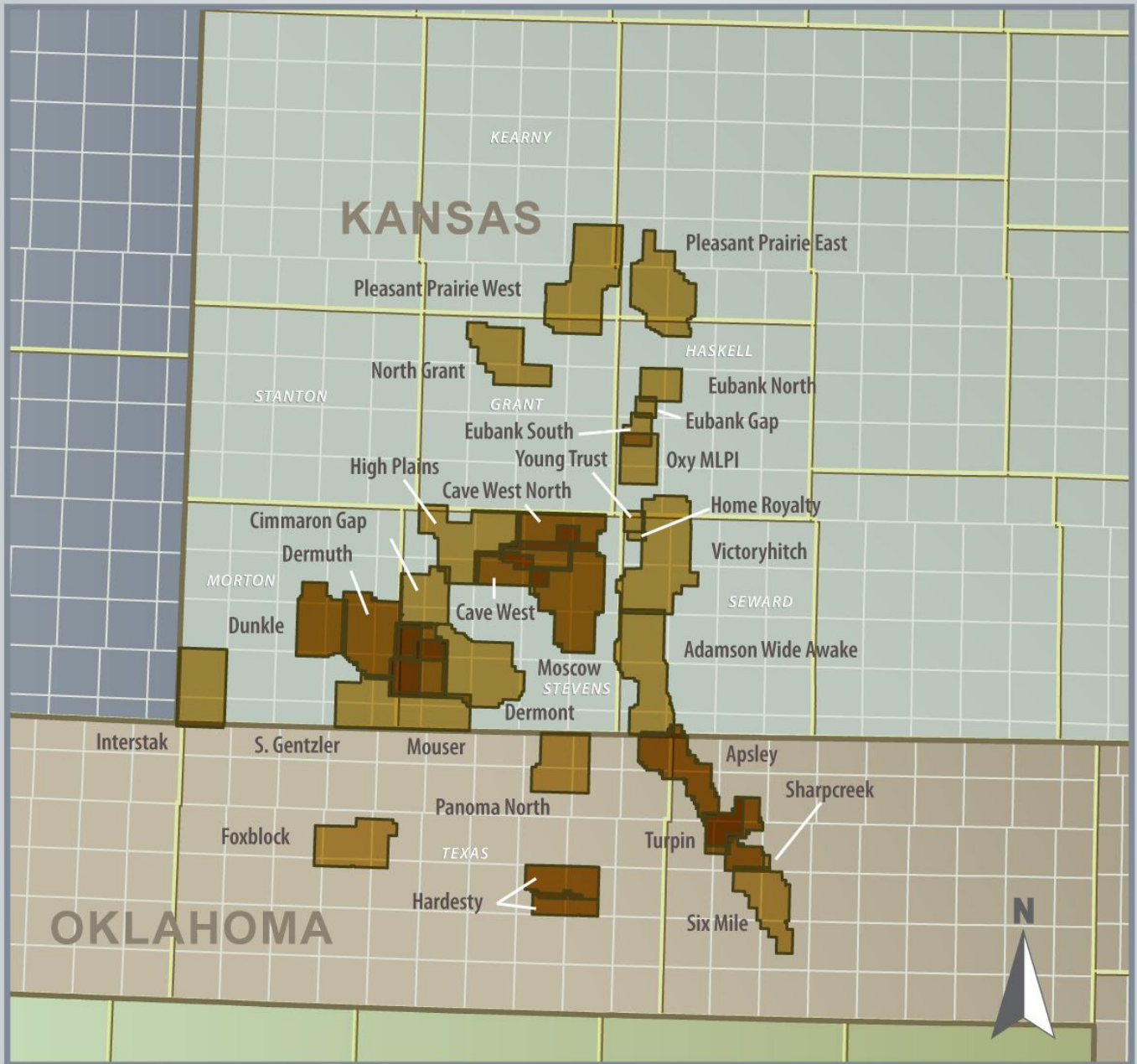
IN THIS ISSUE

Memorials:
Robert Gensch

MEET THE CANDIDATES
KGS Board of Directors
Page 10



3D Surveys now Available for Licensing



- 1994 - 2003 Vintage
- Good quality data
- Volume packages available
- 2D seismic also available



Kansas 3D Surveys

For more information, please contact:
 Leigh Carder, American Geophysical Corporation
 leigh.carder@anadarko.com
 832-636-1438

Pending Management Approval

Date: 3/25/15

Table of Contents

Features

Candidates for KGS Office.....	10
Memorials	18

Departments & Columns:

KGS Tech Talks	4
President's Letter	7
Advertiser's Directory	8
From the Manager.....	9
KGS Board Minutes	10
Professional Directory	19 & 20
Exploration Highlights	24 & 25
Kansas Geological Foundation Memorials.....	26

ON THE COVER:

**Review the candidates for KGS Board of Directors
On pages 10, 11, & 12**

CALL FOR PAPERS

The Kansas Geological Society Bulletin, which is published bimonthly both in hard-copy and electronic format, seeks short papers dealing with any aspect of Kansas geology, including petroleum geology, studies of producing oil or gas fields, and outcrop or conceptual studies. Maximum printed length of papers is 5 pages as they appear in the Bulletin, including text, references, figures and/or tables, and figure/table captions. Inquiries regarding manuscripts should be sent to Rebecca Radford, manager@kgslibrary.com or mailed to 212 N. Market, Ste. 100, Wichita, KS 67202. Specific guidelines for manuscript submission appear in each issue of the Bulletin, which can also be accessed on-line at the Kansas Geological Society web site at <http://www.kgslibrary.com>

SOCIETY Technical Meetings

2015 Technical Talks

Nov. 16th (**Monday**)— Neil Suneson, Oklahoma Geological Survey— *“History of Nuclear Frac’ing in the U.S.: Have We Learned Anything?”*

For More Information or suggestions of speakers please contact Dave Clothier: dave@mccoypetroleum.com

Note: For those geologists who need 30 points to renew their licenses, there will be a sign-in sheet at each presentation and also a certificate of attendance.

*Tech Talks are held at Landmark Square
212 N. Market—4th floor
In the Wisdom Center*



Please remember to check the website for the most up to date information on Technical Talks
<http://www.kgslibrary.com/techtalks.cfm>

The Map Committee has gone through several hundred maps that have been donated over the years. Therefore, we have maps that have been put out on the floor for you to come look through and take for free. That's right....FREE MAPS!! They will be going to the recycle bin by the end of the year so come look and find your next deal!



BOARD OF DIRECTORS

PRESIDENT

Frank Mize

PRESIDENT-ELECT

Tim Hellman

SECRETARY

Chuck Brewer

TREASURER

Leah Kasten

DIRECTORS

Brian Fisher

Ted McHenry

Paul Gunzelman

ADVISORS

Alan DeGood

M.L. Korphage

COMMITTEE CHAIRMEN

Advertising

Kent Scribner

Advisory

Alan DeGood

M.L. Korphage

Annual Banquet

Bob Bayer

Budget Committee

Leah Kasten

Bulletin

Rebecca Radford

Continuing Education

Dave Clothier

Distinguished Awards

Brian Fisher

Environmental

Kent Matson

Field Trip

Larry Skelton

Fishing Tournament

Randy Teter

Future Plans

Chuck Brewer

Golf

David Barker

Historian

Larry Skelton

Investment

Leah Kasten

Library

Roger Martin

Ted Jochems

Membership

Larry Friend

Nomenclature

John H. Morrison, III

Picnic

Wes Hansen

Public Relations

Robert Cowdery

Shooting Tournament

Larry Richardson

Technical Program

Dave Clothier

Ticket Sales

Bill Shepherd

A.A.P.G. DELEGATES

Ernie Morrison
2018

Douglas Davis
2018

BULLETIN STAFF

EDITOR

Ernie Morrison (316) 264-6366

ADVERTISING

Kent Scribner
Stelbar Oil Corp. (316) 264-8378

PROFILES/MEMORIALS

Robert D. Cowdery
Consultant (316) 685-2299

EXPLORATION HIGHLIGHTS

John H. Morrison, III
Independent O&G (316) 263-8281

STATE SURVEY

Rex Buchanan
KS Geological Survey (785) 864-3965

SOCIETY NEWS

KGS Library (316) 265-8676

EDITOR EMERITUS

Wes Hansen (316) 263-7313
Larry Richardson (316) 262-8427

K.G.S. LIBRARY

PHONE 316-265-8676 FAX 316-265-1013

email: frontdesk@kgslibrary.com or

Web: www.kgslibrary.com

LIBRARY MANAGER

Rebecca Radford 265-8676

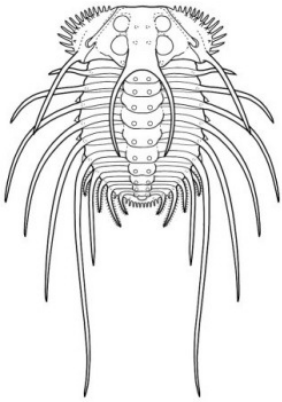
manager@kgslibrary.com

The KGS *Bulletin* is published bi-monthly by the Kansas Geological Society, with offices at 212 North Market, Wichita, Kansas 67202 Copyright 2015, The Kansas Geological Society. The purpose of the *Bulletin* is to keep members informed of the activities of the Society and to encourage the exchange and dissemination of technical information related to the Geological profession. Subscription to the *Bulletin* is by membership in the Kansas Geological Society. Limited permission is hereby given by the KGS to photocopy any material appearing in the *KGS BULLETIN* for the non-commercial purpose of scientific or educational advancement. The KGS, a scientific society, neither adopts nor supports positions of advocacy, we provide this and other forums for the presentation of diverse opinions and positions. Opinions presented in these publications do not reflect official positions of the Society.



**Twenty-two Trucks Serving
Kansas—Colorado—Texas—Nebraska—Illinois**

**DST's
Back Pressure testing (G1 & G2)
Slick line services using the same Weatherford
Electronic Pressure Gauges used on DST's**



**1-800-728-5369
FAX 1-785-625-5620**

**www.trilobitetesting.com
trilobite@eaglecom.net**

**SHOPS LOCATED IN:
Hays, KS
Scott City, KS
Pratt, KS
Hugoton, KS
Oberlin, KS
Clay City, IL**

CAN YOU NAME THE CRITTER?

Sponsored by Trilobite Testing, Inc.

Is your paleo up to date?

If you know the name of the trilobite,
submit your guess via e-mail to
manager@kgslibrary.com

Remember that *Trilobite Testing* is
sponsoring your efforts, so be sure to thank
Paul Simpson the next time you see him.

**CONGRATULATIONS!!
Tom Dudgeon correctly identified
The last one as: Andegavia**

Bulletin committee members and PhD's in
Paleontology are prohibited from entering.



<p>UNIVERSITY OF KANSAS Franklin D. Murphy, M.D., Chancellor</p> <p>STATE OF KANSAS George Docking, Governor</p> <p>MINERAL INDUSTRIES COUNCIL B. O. Weaver (77), Chairman K. A. Spennett (77) W. L. Snyker (77) Simons S. Clarke (78) Lee H. Conell (78)</p> <p>Brain O'Brien (79), Vice-Chairman E. J. Jungmann (78) George K. Mackie, Jr. (79) Charles Cook (76) Dana Hansen (76) Joe E. Denham (76)</p>	<h2 style="margin: 0;">THE SURFACE FEATURES OF KANSAS</h2> <p style="margin: 0; font-size: x-small;">By RAYMOND C. MOORE</p>	<p>STATE GEOLOGICAL SURVEY Frank C. Foley, Ph.D., State Geologist and Director William W. Hamilton, Ph.D., Assistant State Geologist and Assistant Director Raymond C. Moore, Ph.D., Sc.D., Principal Geologist</p> <p>STATE BOARD OF REVENUE A. W. Henshberger, Chairman</p> <p>McDill Bond Clair C. Bradney Ray Evans Clement H. Hall</p> <p>Mrs. Leo Hughey Lawrence Morgan Dora Stadler Harry Valentine</p>
---	--	---

Get Your Maps copied at the KGS library

We can scan, copy, and print up to 44" wide

Color or Black & White

Solid Color @ \$4.00/sq. ft.

Line maps with color @ \$3.00/sq. ft.

Tertiary HIGH PLAINS Cretaceous BLUE HILLS UPLAND Permian SMOKY HILLS UPLAND Pennsylvanian FLINT HILLS OSAGE PLAINS Mississippian Ordovician and Cambrian

President's Letter

Greetings fellow KGS members,

It would appear that the weather patterns and our industry are following the same trend, cooling off. Things are not cooling off in the Library. We have initiated a program to expedite log integration from the basement. Gerald Honas and I are chairing a committee to begin a volunteer effort incorporating information at a faster rate. Our start date was October 9. Kent Crisler has kindly added some of his time as well. Our first efforts are focused on the donation received from Dresser, which includes their log file from when they started work in KS (as Lane Wells) to the late 90's. I've been keeping Leonard Margheim (our favorite Dresser Analyst) informed as to our progress, and he is delighted. My current estimate is that we have over 80,000 logs to review. This process includes checking each log to see if we have it, and if so, do we have a good copy? So we add the logs we didn't have, as well as the better copies that we need. At the time of this writing, we have reviewed 430 logs, and have added 149 new logs, and rescanned 23. Most rescans are adding final prints to the file where we only had field prints, or where we had 'fuzzy' or damaged logs. The bottom line is that our information discovery is at 34%! If you are following along with the numbers, it also means we have completed about 1/200th of the Dresser collection. Obviously, this is a monumental task, and Jerry, Kent & I would welcome some diligent help. If you would like to volunteer some time, please contact either Jerry or myself, as there is a learning curve to the process, as well as rules and procedures that must be followed.

My pictures this week come from our trip to Maine in September. One is a shot looking east toward Winter Harbor from the top of Cadillac Mountain (all Granite). This is the highest point on the Atlantic east coast (1530'). The photo is overlooking the Porcupine Islands, just east of Bar Harbor. This is where we have the earliest sunrise in the US during the fall and winter. In the second picture, I'm examining a large Diorite boulder on Schoodic point. This boulder has obviously been rounded by wave action, and thrown up onto this Granite platform. It's been there a long time, as the Plagioclase has weathered. Imagine the power of the wave required to move this rock! I had to look it up, but this boulder weighs between 1 and 2 tons.

I'm still waiting to see some of those 'bucket list' photos from the rest of you, so send in your pictures, and you will be credited in the next issue of the KGS Bulletin!

Frank S. Mize
President 2015



Kansas State University
DEPARTMENT OF GEOLOGY

Graduate education for active professionals in this innovative program, workshops, site visits and distance courses help professionals advance in their careers. Whether your goal is to receive academic credit, certifications or a master's degree in geology, you'll find a path that leads to your career goals.

CHOOSE FROM SPECIALIZATIONS IN:

- ▶ Petroleum geology
- ▶ Environmental geochemistry
- ▶ Structural Geology
- ▶ Groundwater
- ▶ Exploration geophysics
- ▶ Geomicrobiology

LEARN MORE

Contact Pamela Kempton, department head, for more information at pkempton@k-state.edu. Or contact any of our program partners to learn more.

*K-State Global Campus: dce.k-state.edu
 Geology department: k-state.edu/geology
 Graduate School: k-state.edu/grad*



Library Holiday Hours

Closed

November 26th & 27th

December 24th & 25th

December 31st & January 1st

**The Library Staff Wishes
 Everyone
 Happy Holidays!**



ADVERTISER'S DIRECTORY

	<i>page</i>
Allied Cementing Company, Inc	23
Anadarko (American Geophysical Corp.)	2
Breckenridge Exploration Company	15
Duke Drilling	23
GeoSteering	14
Global Geophysical	15
Kansas Geological Foundation	26
Kansas State University	8
Lockhart Geophysical	23
Lone Star Geophysical Surveys	16
MJ Systems	21
MBC Well logging	23
Murfin Drilling Company, Inc	23
Neuralog	15
PARAGON Geophysical Services, Inc	13
Pratt Well Service	15
Professional Directory	19-20
Sunrise Oilfield Supply	23
Tomcat Drilling	23
Trilobite Testing	6
Walters Digital Library	2
Weatherford	27
Well Enhancement Services	14

ADVERTISER'S RATES: 2015

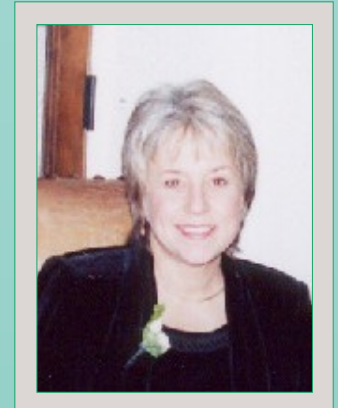
Full Page	B&W	Color
6 issues	\$2,000	\$2,500
3 issues	\$1,080	\$1,325
1 issue	\$480	\$525
1/2 Page		
6 issues	\$1,000	\$1,500
3 issues	\$540	\$825
1 issue	\$225	\$350
1/4 Page		
6 issues	\$600	\$900
3 issues	\$325	\$525
1 issue	\$150	\$250
1/8 Page		
6 issues	\$300	\$500
3 issues	\$175	\$325
1 issue	\$75	\$185
Professional Ad (Business Card)		
6 issues	\$90	\$180

For one-time ads, call Rebecca at 316-265-8676

From The Manager

Dear Members,

I can't believe how fast this year is passing by. I started my 15th year at the Society this past October and I am still enjoying the heck out of this job. I attribute the enjoyment to all of the people. I have met some outstanding individuals during my tenure with the Society and keep meeting more. For instance, I met several new folks at the Mid-Continent meeting in Tulsa this year. Tulsa put on a great meeting with a nice slate of speakers and talks. Traffic at our booth was good and we had a lot of Wichita and other Kansas folks in attendance. Our own Sal Mazzullo received his 4th Levorsen Award, see photo on page 13. Also Doug Davis received a Meritorious Service Award for running the 2013 Mid-Continent Convention. We also had some fun moments with musical geologists! Photos on pg. 13.



Now is the time of year that we gear up for KGS elections. Starting on page 10, you can see the candidates and their bios. Please watch for your ballot in the mail. Also this year, we have another issue to be voted on. Changing our By-Laws to allow the Board to go from a full audit to a compilation of our accounting and books. The cost of the full audit is quite expensive and our understanding from our accountants is that a compilation of our records will still verify that our books are in order and our procedures are working well for the Society.

We had a great Clay Shoot again this year. Thanks go out to **Larry Richardson, Kent Crisler, and Rick Saenger**. What a beautiful day we had. And **Pat Kane with Tucker** cooked us up some delicious hamburgers and fed us well. Thank-you guys! See some photos on page 25.

As the holidays approach, we can only hope for the return of a better price for oil and gas. I hope you all are weathering the storm of low prices and we can get back to being busy in 2016! **Your library will be closed for Thanksgiving (Nov. 26th & 27th) and for Christmas (Dec. 24th & 25th) and New Years Eve & New Years Day. Happy Holidays to you all!**

Respectfully submitted,
Rebecca Radford
Manager

Stop by the library and peruse our collection of free maps! FREE MAPS!!! All kinds of maps! They will be going into the recycle bin by Jan. 1st so come check it out!



**Let Us Print Your Geo Reports
And Save Your Time For Finding More Oil & Gas
Top Quality Color Printing For Our Membership**

Email your files to: kgsorders@gmail.com

MEET THE CANDIDATES

President Elect 2016—President 2017



Paul Ramondetta

Education:

B.S. Geology, Brooklyn College, 1971
Masters Geology, Brooklyn College, 1975
Post graduate classes at University of Houston, Rice University, and University of Texas at Austin, 1975-1981.

Professional Experience:

Geology Lab Instructor, Brooklyn College, 1972-1974
Seismic Processor, Western Geophysical in Houston, 1974-1976
Geology and Physics Instructor, Houston Community College, 1976-1979
Consulting Geologist in Houston, 1976-1979
Research Geologist, Bureau of Economic Geology in Austin, 1979-1981
Petroleum Geologist & Supervisor, Cities Service/Oxy, Wichita, OK City, Bakersfield, Tulsa, Doha; 1981-1998
Exploration & Exploitation Manager, Vess Oil Corp, Wichita, 1998 to present.

KGS Board and Committees:

KGS Board, Secretary/Treasurer 2013-2014

Professional Affiliations:

AAPG
Kansas Geological Society



Robert Stolzle

Education:

B.S., Geology, 1972,
L.S.U., Baton Rouge, LA

Professional Experience:

Consulting Geologist—1985-Present
Foundation Resources
Team Resources Corp.
Anschutz Corporation
Staff Geologist—Kenai Oil & Gas, Inc. 1982-1985
Exploration Geologist—Terra Resources, Inc. 1980-1982
Exploration Geologist—MAPCO, Inc. 1978-1980
Geologist—R.R. Thorup Consulting Geologists 1972-1978

Professional Affiliations:

Kansas Geological Society
Licensed Kansas Geologist #278
AAPG Certified Professional Geologist #5692
Society of Petroleum Engineers
Geological Society of America

KGS Board and Committees:

KGS Board Director 2007-2008
Kansas Geological Foundation Board President 2013 & 2014

MEET THE CANDIDATES

Secretary 2016—Treasurer 2017



Wes Hansen

Education

B.S. in Chemistry – 1974
Wichita State University
B.S. Geology – 1981
Wichita State University

Professional Experience

Staff Geologist Aspen Oil Company 1981-82
Staff Geologist Titan Resources (Houston, TX) 1982
Consulting Geologist 1982-2008
Staff Geologist Hartman Oil Company 2008-2009
Consulting Geologist 2009-Present

Professional Affiliations

KGS (34 years)
AAPG (11 years)
Kansas License #418

KGS Boards and Committees

Past KGS Board of Directors
Present KGF Board of Directors
Past Golf Tournament committee member
Editor Emeritus KGS Bulletin (10 years?)
KGS picnic Chairman 2013 – present



Kerry Parham

Education:

M.S. Geology, Wichita State University, 1989
B.S. Geology, Wichita State University, 1981
Sigma Gamma Epsilon (Honors Society)

Professional Experience:

Terra Firma Exploration Inc., 2004 – Present
Terra Inspections, Inc., 1993-2013 (concurrent)
KU Center for Research (team that created model for PTTC)
1992-1993
Kansas Geological Survey (Research Scientist) 1990-1992
Consulting Geologist 1988-1990 and 1986-1987
Falcon Exploration 1987-1988
Kan-Ex, Inc. 1984-1986
Reach Group 1983-1984
Hoppe Oil & Gas 1981-1983

Professional Distinctions and Affiliations:

AAPG – Certified Petroleum Geologist #4336
Kansas State Licensed Geologist #369
Kansas Geological Society & Library

KGS Board and Committees:

Speakers Bureau, 1997-1998

MEET THE CANDIDATES

Director at Large



Toby Eck

Education

B.S. Petroleum Geology, Fort Hays State University
M.S. Geology, Wichita State University

Professional Experience

Well-site Geologist 2010-2011
Exploration Geologist, Mull Drilling Co. Inc.
5/2011– 10/2014
Exploration Geologist, Shakespeare Oil Company,
10/2014-Present

Professional Affiliations

Kansas Geological Society
Rocky Mountain Association of Geologists
AAPG
SEG



Aaron Young

Education:

M.S. Earth, Environment and Physical Sciences,
Wichita State University, 2013
B.S. Geology, Wichita State University, 2011

Professional Experience:

Pickrell Drilling Co, Inc. – Exploration & Wellsite;
2014-Present
Consulting Geologist – Exploration & Wellsite;
2013-Present
Trek AEC, LLC – Consulting Geologist; 2012-
2013
Sandridge Energy – Geologist Intern; 2012
American Energies Corp. – Geotech; 2010-2012
Pickrell Drilling Co., Inc. – Geotech; 2010-2011

Professional Affiliations:

AAPG
Kansas Geological Society

Robert F. Walters Digital Library

The most complete source for Kansas data

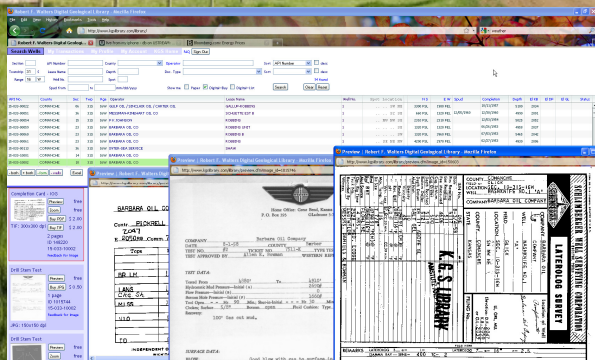
Database updated nightly

Day or Night

You can get to the data as you need it

www.kgslibrary.com

To Join: call 316-265-8676



Providing Quality Seismic Since 1993

Visit our website at
www.paragongeo.com



3500 N. Rock Rd., Bldg. 800, Wichita, KS 67226 316-636-5552
paragon@paragongeo.com

AAPG Mid-Continent Meeting



Doug Davis receiving Meritorious Service Award from Don Burdick



What's a geology meeting without some ROCK?



Shane Matson presenting Sal Mazzullo with the A.I. Levorsen Award (Sal's 4th!)



WOULD YOU LIKE TO INCREASE YOUR PRODUCTION AT A FRACTION OF THE COST OF HORIZONTAL DRILLING?



Well Enhancement Services, LLC is jetting laterals utilizing new technology and coiled tubing. We now have the ability to place hundreds of gallons of acid hundreds of feet away from the well bore. This allows us to not only enhance existing production but to produce reserves previously unreachable. It has established itself by repeatedly increasing production in both new and existing wells. Contact us for more information, questions or to schedule your next well with **WES**.



“Tap into success.....with WES”

Please Contact Us:

Phone: (785) 625-5155

Fax: (785) 625-4151

Field: (785) 259-4638

wesofhays@hotmail.com
Box 87, Schoenchen, KS 67667

www.**GeoSteering**.com

281-573-0500
info@geosteering.com

Free introductory consultation with modeling: let us demonstrate whether images or propagation resistivity could add value to your well.

Personnel with degrees & 20+ years of oilfield experience

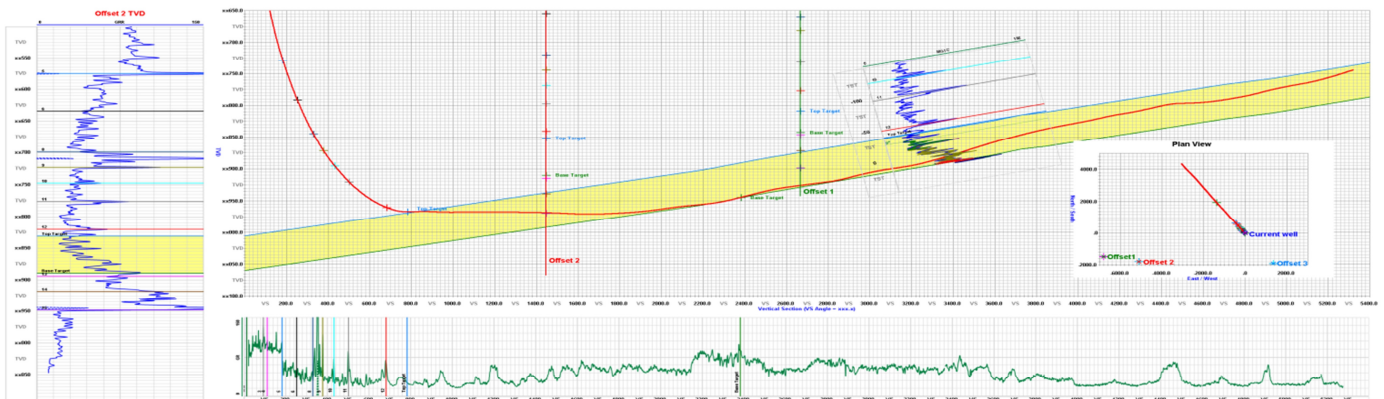
Proprietary software

TST interpretation for GR only jobs

Image displays / interpretation for jobs with azimuthal GR, resistivity or density

Resistivity modelling / interpretation for jobs with LWD propagation resistivity

Real-time (always)





Call us 24
Hours-A-Day
620-672-2531



Complete Well Service

Since 1946

P.O. Box 847
Pratt, Kansas 67124

Kenneth C. Gates
President

Kevin C. Gates
Vice President

1-800-660-7974
Fax: 620-672-5902

Member KIOGA /AESC

Equipment yard & field office:
1 3/4 miles North on Highway K-61 from 54 & K-61 Junction

- . Experienced Crews . Rod & Tubing Service . Workover & Completions . Swab Tanks
- . Pole Masts-Single and Double Derricks . Air Foam Unit . Monitor & Water Well Drilling
- . Reverse Circulating Pump & Power Swivel Equipment . Statewide Oilfield Hauling
- . Environmental Cleanup . Vacuum Trucks/Water Trucks . Dirtwork-Dozers, Grader, Backhoe

Hydrovac Excavation Service

- . Cleaning cattle guards
- . Mud tank cleaning
- . Potholing . Trenching
- . Pipeline Crossings

www.prattwell.com



Eagle Vision Video
Well Inspection



**BRECKENRIDGE
EXPLORATION
COMPANY, INC**

SEISMIC ACQUISITION

Check us out at www.breckex.com

Breckenridge Exploration Co., Inc.
Highway 180 E
P.O. Box 789
Breckenridge, TX 76424
Bus: (254) 559-7566

Denver Colorado Office
600 17th Street, Ste. 2800 S
Denver, Colorado 80202-5428
Bus: (303) 563-5301
Mob: (254) 559-0587

Sensible Seismic Acquisition in the Mid-Continent and the Rockies



Neuralog
Turning Paper Into Petroleum

Bryan Mills
Regional Sales Manager

Solutions for Today's Geoscientists

- Scan, Print & Digitize - Logs & Maps
- Geological Interpretation
- Master E&P Data Management

1.281.240.2525

bmills@neuralog.com · www.neuralog.com

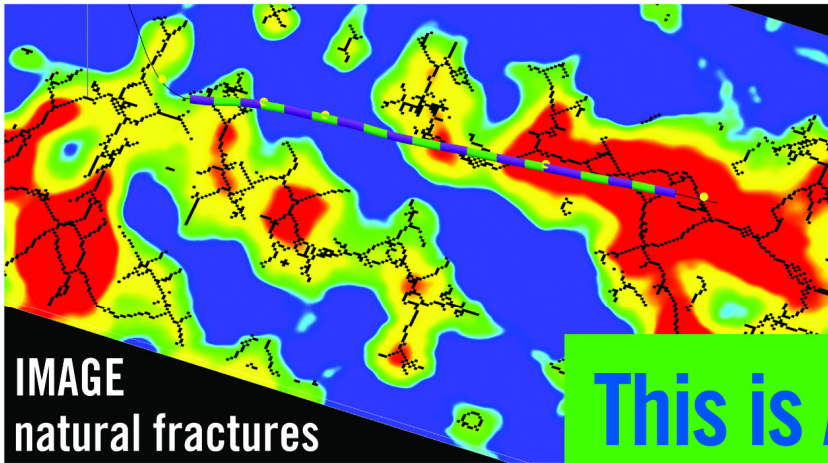
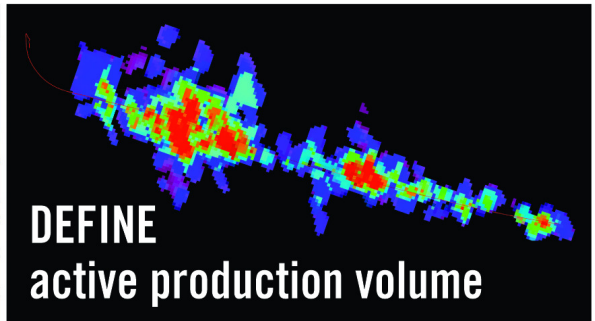
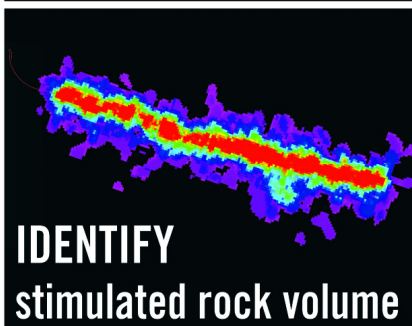


IMAGE
natural fractures

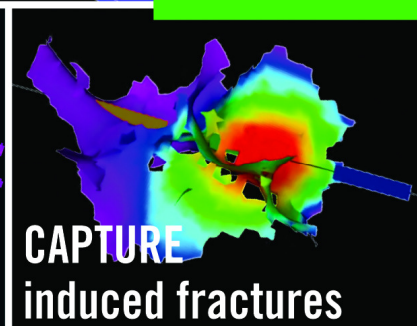


DEFINE
active production volume

This is AMBIENT Seismic.



IDENTIFY
stimulated rock volume



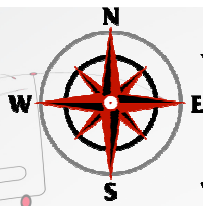
CAPTURE
induced fractures

Global Geophysical's innovative approach to ambient seismic provides direct imaging of acoustic activity in the subsurface. This allows us to identify areas or zones that are acoustically active due to natural fractures, hydraulic stimulation or production-related activities. Our ambient seismic results can be presented as 3D attributes, as discrete volumes of acoustic activity or as Tomographic Fracture ImagesSM.

For more information:
www.globalgeophysical.com/AMBIENT or
Contact us at AMBIENT@globalgeophysical.com

Global Geophysical Services
+1 713-972-9200 www.globalgeophysical.com

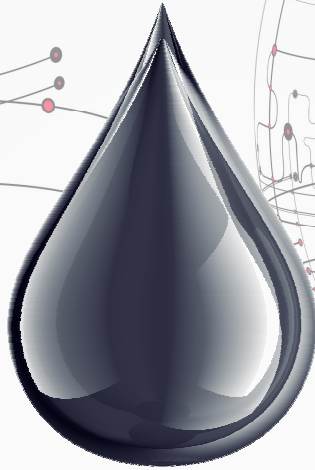




LSGS

LoneStar Geophysical Surveys

It's Real Simple. It's Real Effective.



Locating every last drop.



SUPERIOR SEISMIC ACQUISITION SYSTEM



DATA RECORDING 2D, 3D, 4D



AHV-IV™ COMMANDER 364



PERMITTING SERVICES



HSE MANAGEMENT SYSTEM



FRONT-END SER-



SHOT HOLE DRILL-



ING



BRUSH CLEARING



CHAINSAW CREWS

HELIPORTABLE



SUBMIT A BID REQUEST ONLINE:

www.lstargeo.com

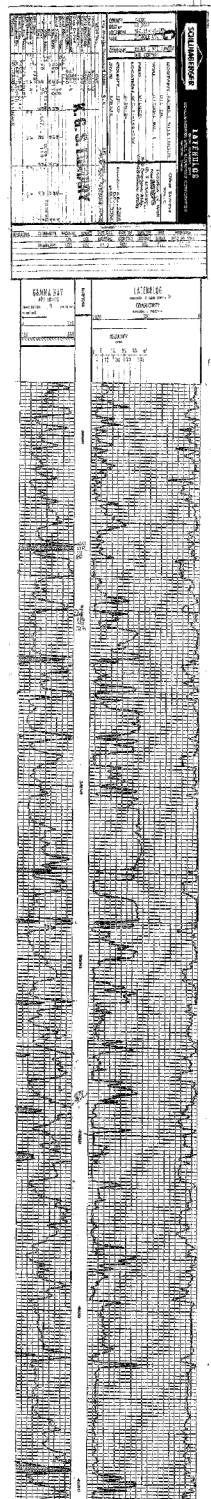
441 So. Fretz Avenue Edmond, Oklahoma 73003 (O) 405.726.8626 (F) 405.285.8521 lsgs1@lstargeo.com

*The KGS Wishes To Thank The
Following For Their Support of the
KGS Clay Shoot*

Allied Cementing Co., Inc.
Andy's Mud & Chemical
Basic Energy Services
Breckenridge Geophysical
Buckeye Supply
Central Kansas Surveying & Mapping
CHS McPherson Refining, Inc.
Coffeyville Resources
Dawson Geophysical
Diamond Testing
Duke Drilling
Eagle Creek Corporation
Edwards Consulting
Empire Energy
Grand Mesa Operating Co.
Gressel Oilfield Service, Inc.
Hedke-Saenger Geoscience
Hesse Petroleum Co., LLC
The Independent
Lockhart Geophysical
Log Tech, Inc. of Kansas
Lone Star Geophysical
Lotus Exploration Co., LLC
Roger Martin
Max Lovely
MBC Well Logging & Leasing
McDonald Tank
Ernie and Pat Morrison
Mud-Co/Service Mud, Inc.
Mull Drilling Company, Inc.
Murfin Drilling Company, Inc.
Nabors Well Service
Nalco Chemical
Paragon LLC
Pratt Well Service
Raymond Oil Company
Larry Richardson
Don Shawver
Sunrise Oilfield Supply
Sweetman Investments, LLC
Theis Dozer Service
Trilobite Testing, LLC
Thoroughbred Associates
Vector Seismic Processing, Inc.

And Pat Kane for Cooking!

*The KGS Library is pleased to
announce a new service*



Creating
LAS files
from our logs
or yours

**\$20.00 per
curve!!**

Quick
turn-around

Send us your log file
or tell us which of
ours you would like
converted.

316-265-8676

The Kansas Geological Society maintains its ownership
and copyright when converting library log files to LAS

Memorial — *Robert Gensch*



Robert D. "Bob" Gensch passed away peacefully in his home surrounded by loving family members and his faithful dog Ruby on September 5, 2015 at the age of 94. He was born on May 31, 1921 in Wichita Kansas. Bob was a successful petroleum engineer, geologist, landman and oil operator – a one man oil company and devoted to the love of the oil and gas business in Kansas.

Bob was the third generation in his family to follow the tradition of his maternal grandfather, William Donley who turned his first deal at the age of 16 and was a successful oil man from Pennsylvania who moved to Kansas in 1918 when the El Dorado and Augusta pools were discovered. Bob's Dad, Louie Gensch was the 8th employee of Derby Oil Company. After graduation from North High School in 1939, Bob enrolled at the University of Wichita as a geology major, lettered in Tennis and Golf. He was called into the service in 1943 whereupon he married his college sweetheart Gloria Goodwin, the mother of his 4 children. He was then commissioned as a 2nd Lieutenant and assigned to the 90th Infantry Division where he served under Gen. Patton and engaged in the campaign in the Metz and Saar regions of western Germany. Bob returned to the States when he finished his service as a 1st Lieutenant serving as the Assistant Provost Marshall at Ft. Lewis, Washington. One of the highlights of this service was when he was chosen to be the personal bodyguard to General Eisenhower during the general's visit to Fort Lewis. He also played a number of rounds of golf with the General's brother, Charles.

He finished his geology degree at Wichita University in 1947 and began his career as an engineer in Texas with Stanolind Oil & Gas (Amoco), then as a geologist with Bridgeport Oil Co, then District Engineer and Assistant Production Superintendent in Great Bend for Cooperative Refining Association. From March 1951 to April 1954 he served as District Geologist and Co-District Manager for Deep Rock Oil Corp in Wichita. In 1954 he became an Independent Geologist and for the next 10 years, served as an experienced well site geologist averaging over 200 days in the field a year watching wells primarily for Joe Aylward and E.B. Shawver who both had two rigs each drilling wells across the State of Kansas.

Later from 1970 to 1975 Bob moved to Evergreen, Colorado and was a consultant in the Denver area turning some drilling prospects in Colorado and Wyoming, and also put together drilling deals, doing consulting and well site geology in Kansas. Bob partnered with a Denver geologist and worked as the sole landman on a major wildcat play leasing over 100,000 acres in South Dakota, where three wildcat test wells were drilled.

Returning to Wichita in 1975, he established Marshel Oil and Gas, Inc., serving as owner and President with operations in various parts of Kansas, his area of interest being primarily in the Barber County area. He had many unique experiences watching and operating wells including one of the few historic gas well fires in Kansas in 1976, where the famous Red Adair, of Houston Texas came to Kansas with his crews for the first and possibly only time to put out a major fire in a gas well that Bob owned 90% of the interest. Adair admired him as they worked together to build an innovative device in Medicine Lodge that was instrumental in putting the fire out. Rumor has it that a good portion of his fees were covered by the Shah of Iran who also contracted Adair at the same time to put out a major Persian Gulf well fire.

Bob had semi-retired in 1988, and for a time did a lot of traveling with his wife Patty, and leisurely still put deals together, but in time became a very busy landman usually called in to get the really hard leases, as he had a knack to quickly read people and learned what it took to get stubborn farmers and ranchers to lease on his terms. He continued this work up until about 2010 at the age of 89 when he had to slow down to care for his wife.

Bob had tenacity, a great sense of humor, charming personality, endearing orneriness and love for his friends and family that will always be happily remembered. He was preceded in death by his wives, Gloria in 1961 and Patty in 2011; sister, Betty Lester; and grandchildren, Michael and Glorianna Gensch. Survivors include his sons, John (Cindy) Gensch of Wichita and their children, Jeromy and Ben Gensch; David (Denise) Gensch of Houston, TX and their children, Ryan, Eric and Jonathan Gensch; Gary (Diane) Gensch of Wichita and their children, Christine Kelly, Brian and Daniel Gensch; daughter; Marty Lee of Wichita and her children, Chelsea Loy and Kayla Lee; 9 great-grandchildren; cousin, Jean Binford of Scottsdale, AZ; and his dog Ruby, a dear friend and companion.

A memorial has been established with R.A.C.E. Charities and Live Loud Charities, two charities independently founded by Bob's grandchildren Glory, Jeromy and Ryan Gensch dedicated to raise research funds for the early detection of colon cancer and brain cancer respectively, and the Kansas Geological Foundation. Share condolences at www.CozineMemorial.com. Services by Broadway Mortuary.

Funeral services were held at 1:00 pm, Friday, September 11, at Heartland Community Church, with military honors, and he was interred in the Gensch Family plot at Kensington Gardens in Wichita.

PROFESSIONAL DIRECTORY

Kirk Rundle
Consulting Geophysicist
*3D Seismic Design, Acquisition to Processing QC.,
 Interpretation and Analysis, Subsurface Integration*
 7340 W. 21st. N., Ste. 100
 Wichita, Kansas 67205

Office: 316-721-1421 Fax: 316-721-1843
 Email: kirk@rundlegeo.com

ROGER L. MARTIN
Independent Petroleum Geologist
 200 E 1st St, Ste 405, Wichita, KS 67202

Office 316-833-2722 Cell: 316-250-6970
 KS Field Cell: 316-655-1227
 Fax: 316-425-3829
 Email: rogermartingeo@yahoo.com


Blue Ribbon Drilling, LLC
 PO Box 279, Dewey, OK 74029

Phone and Fax: 918-534-2322
 John's Cell Phone: 918-440-9639
 Larry's Cell Phone: 918-440-9638
 Jeff's Cell Phone: 918-440-9647
 Email: johnroutree@bratco-operating.com

ALFRED JAMES III
Petroleum Geologist
 Kansas - Colorado - Utah

4912 E. 29th St. N., Ste. 3, Wichita, Kansas 67220

SIPES # 1111
 Office (316) 267-7592
james.alfred21@yahoo.com



Scott Banks
Petroleum Geologist
banksbs@aol.com
 Cell: 316.253.8550

1700 N. Waterfront Pkwy.
 Bldg. 300 • Suite C
 Wichita, KS 67206

Phone: 316.558.5262
 Fax: 316.558.5263

Banks Resources

M. Bradford Rine
Honorary Life Member—Kansas Geological Society

*Licensed Geologist—KS, #204
 Registered Professional Geologist—Wyo. # 189
 Certified Geologist—A.A.P.G. # 2647
 S.I.P.E.S. # 1584 S.P.E. #109833-4*

PROSPECT EVALUATION • PROSPECT GENERATION
 WELLSITE SUPERVISION • EXPERT TESTIMONY • OPERATIONS
 PROPERTY EVALUATION • RESERVOIR STUDIES
 DRLG./COMP. CONSULTATION

Suite 415 Office: (316) 262-5418
 100 S. Main Fax: (316) 264-1328
 Wichita, KS 67202 Cell: (316) 250-5941

WESLEY D. HANSEN
Consulting Geologist
 Well site Supervision • Geologic Studies
 212 N. Market, Ste 257
 Wichita, Kansas 67202
 Off: (316) 263-7313
 Mobile: (316) 772-6188
whansen4651@sbcglobal.net



Paul Gunzelman
 President/Geologist

Wichita, Kansas 316.634.6026
 email p.gun@sbcglobal.net



KEVIN L. KESSLER
 INDEPENDENT/CONSULTING PETROLEUM GEOLOGIST

WELLSITE SUPERVISION • GEOLOGIC RESEARCH
 OIL & GAS PROSPECTS
 KANSAS & EASTERN COLORADO

MAILING ADDRESS	PHONE
1199 N. PONDEROSA RD.	RES.: (316) 522-7338
BELLE PLAINE, KS 67013	MOBILE: (316) 706-6636
EMAIL: KKESSLER1199@AOL.COM	

MELLAND ENGINEERING, INC.
Petroleum Engineering & Geological Consulting

James E. Melland, P.E., P.G.
 President
 Office: (620) 241-4621 Fax: (620) 241-2621


jamesm@mellandengineering.com
www.mellandengineering.com

P.O. Box 841, McPherson, KS 67460

KGJ ENTERPRISES

Contract Oil & Gas Accounting &
 Office Management

Kathryn G. James, MBA (316) 775-0954
 4278 SW 100th ST. (316) 250-5989
 Augusta, KS 67010 kgjames@onemain.com



Steve Van Buskirk
Petroleum Geologist
Van Buskirk Geo-Consulting

15171 Ridgfield Ln
 Colorado Springs, CO 80921
 and
 514 Rumsey
 Kiowa, KS 67070

Home: 719-487-8297
 Cell: 719-393-2900
Nexleveline@msn.com

Available for Well site work



Geotech & Design Services

7171 Highway 6 North, #202
Houston, Texas 77095

Data digitizing, drafting & processing

Tel: (281) 858-7100

Fax: (281) 500-8534

helen.schubert@geotechmaps.com

Helen Schubert
Project / Sales Manager

www.geotechmap.com

Covey—The Well Watchers

“One Thousand Wells and Counting”

Curtis E. Covey

Wellsite Petroleum Geologist

Gas Trailer Cell: 316-217-4679
Email: wellsitegeo1@gmail.com

Office: 316-776-0367
6548 Bedford Circle
Derby, Kansas 67037

Gas Detection Trailer & Internet/Phone Communications

NOTICE!!!!

**WSU GEOLOGY CLUB
& Papa John's Pizza**

Papa John's offered WSU student organizations an opportunity to raise monies for their organizations.

The **WSU Geology Club** is participating
And **YOU** can help them!

When ordering pizza from Papa John's,
Use this code: **WSU004**
(those are zero's, not letter O)

With this code, the customer will receive 40% off their entire online order and WSU's AAPG Student Chapter will receive 10% of the money spent on the order.

**Eating pizza tonight?
Let's help WSU Geology Club!**

Monies raised will be used towards gas money to travel to local schools when they promote the geosciences to grade schools, registration costs for workshops, seminars and AAPG Student Expos, and social and academic events like an upcoming "Lunch and Learn" series next fall.

**We Invite You
To join**

**Kansas
Geological
Foundation**

*\$50.00 membership is
tax deductible*

Call 316-265-8676

*Or send checks to:
Kansas Geological Foundation
212 N. Market, Ste. 100
Wichita, KS 67202*

The Following Are For Sale

*Kansas Completion Cards:
Several sets (call for more information)*

*1 Set Kansas Well Log Bureau Drillers logs
(1920's—1970's—both east & west ranges)*

Oklahoma Completion Cards: 2 sets—entire state

New Mexico Completion Cards

North Dakota Completion Cards

Utah Completion Cards

Microfiche Electric Logs

*Kansas
Oklahoma
Texas*

Geological Office Furniture:

- 8-drawer completion card cabinets
- 7-drawer cabinets
- Map cabinets—metal—2 available
- Map racks—different sizes—6 available

**Call: 316-265-8676
Ask for Ted**

Kansas Geological Foundation Video / DVD Collection

The KGF has an extensive collection of videos available for check-out at no charge. Only pay for shipping back.

These are ideal for classroom or general public viewing.

See the web for titles & descriptions
www.kgfoundation.org

Call 316-265-8676
Ask for Janice to check out videos

AAPG Needs You!

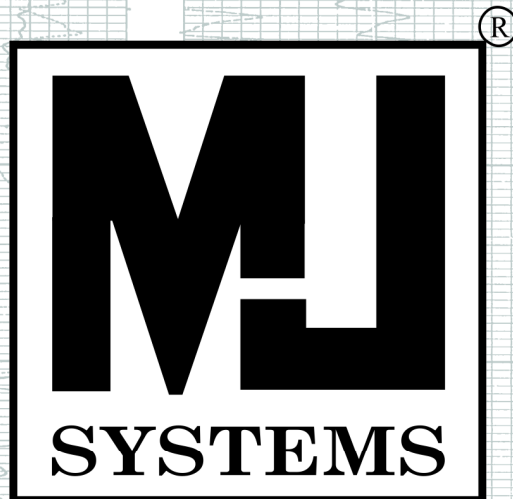
Professional geoscientists, share your world!

The Mid Continent Section has **17 AAPG Student Chapters**, but only **3 Visiting Geoscientists**...which makes it almost impossible to have a professional geoscientist visit to each school at least once a year or even once every two years. The aim of AAPG's program is to give students a flavor of a professional life in energy resources. It also hopes to encourage dialog between industry and academia.

To be a Visiting Geoscientist bearing the AAPG flag, you are asked to have at least 5 years of experience and make at least one visit per year to a university. It can be a school with an AAPG Student Chapter, or a college/university without one. Your choice.

The Mid Continent schools with Student Chapters are: Missouri University, Fort Hays State University, Iowa State University, Kansas State University, Missouri State University, University of Nebraska, Northwest Missouri State University, Oklahoma State University, University of Oklahoma, University of Arkansas, University of Iowa, University of Kansas, University of Missouri, Columbia University of Tulsa and Wichita State University.

Contact Robbie Gries, co-Chair VGP committee, Denver, if you are interested in learning more. rrgries@aol.com



Logs Since 1971

www.mjlogs.com

6 MILLION LOGS

DEPTH REGISTERED

**INTERNET
DOWNLOADS**

**ONLINE
SEARCH**

SEARCH AND FILTER BY DEPTH

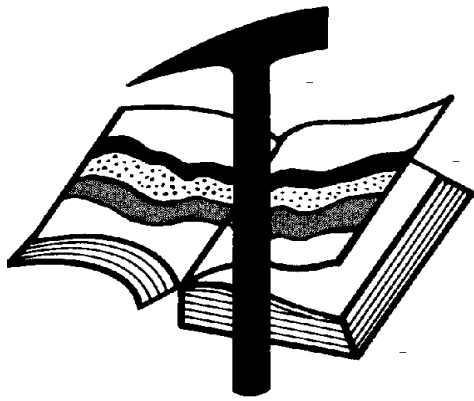
OWN THE LOGS

LogSleuth Software

CLUB WEB

WEB SITE CATALOGUE

1-800-310-6451



Kansas Geological Foundation

Web Site: www.kgfoundation.org

**212 North Market
Wichita, Kansas 67202**

A not-for-profit educational and scientific corporation

GOALS:

- promote geology and earth science
- preserve geological records
- establish memorials and endowments
- support field trips and seminars
- financial aid and grants to students

PLEASE HELP SUPPORT THE FOUNDATION

Kansas Geological Foundation Services

The Kansas Geological Foundation provides the following services as a part of the organization's commitment to educate the public regarding earth science.

Speaker's Bureau

A list of speakers available to talk about various aspects of geology may be obtained by contacting Janice Bright at the KGS Library, 265-8676. This service is free to the public.

DVD/Videotape Library

The KGF maintains a DVD & videotape library focused primarily on the various fields of earth science. These tapes may be checked out without charge by the public. To obtain a list of tapes, please contact the KGS Library, 212 N. Market, Ste. 100, Wichita, KS 67202, or call Janice Bright at 265-8676.

The Kansas Geological Foundation was founded in March, 1989 as a not-for-profit corporation under the guidelines of section 501(c)(3) of the tax code to provide individuals and corporations the opportunity to further the science of geology. It is dedicated to providing charitable, scientific, literary and educational opportunities in the field of geology for the professional geologist as well as the general public.

KGF can receive in-kind donations through which the donor may receive a tax deduction. Of equal importance, the KGF provides the financial resources to sort, process and file this data at the KGS library. If you have a donation to make, please contact the KGF at 265-8676.

Your tax-deductible membership donation helps to defray the cost of processing donations and to support public education programs about the science of geology. Annual membership begins at \$50.00 per year. Donations of \$100.00 or more are encouraged through the following clubs:

Century Club	\$ 100 to \$ 499
\$500 Club	\$ 500 to \$ 999
Millennium Club	\$1000 to \$5000
President's Club	\$5000 and over

WESTERN KANSAS
SOUTHERN NEBRASKA



EASTERN COLORADO
OKLAHOMA PANHANDLE

**12 Drilling Rigs
To Depth of 8,500 ft.**

**11 Well Service Rigs &
Roustabout Services**

For contract information, please contact:
Blaine Miller, Drilling Manager
316-858-8607 (Direct) or 316-267-3241

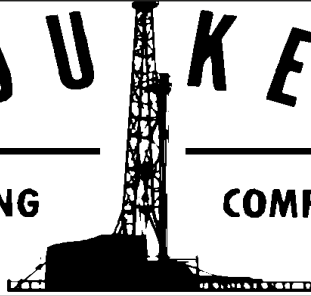
For contract information, please contact:
Jesse Spargo, Well Service Sprvsr.
785-421-2103

250 N. Water #300—Wichita, KS 67202

East Highway 24—Hill City, KS 67642

DUKE

DRILLING COMPANY



ROTARY DRILLING CONTRACTOR

620 Hubbard PO Box 823
Great Bend, KS 67530
Phone 620-793-8366

100 S. Main, Ste. 410,
Wichita, KS 67202
Phone 316-267-1331
Fax 316-267-5180

Free Maps at the library!
Free Maps at the library!

Great Bend (620) 793-5861 Ness City (785) 798-3843 Medicine Lodge (620) 886-5926

ALLIED CEMENTING CO., INC.

Acidizing Available at Medicine Lodge District

Russell (785) 483-2627 Oakley (785) 672-3452

LOCKHART GEOPHYSICAL

2D & 3D Vibroseis Acquisition
ARAM*AIRES Seismic Recording System

1600 Broadway, Suite 1660 • Denver, CO 80202-4915
(303) 592-5220 • info@lockhartgeo.com
for complete information go to: www.lockhartgeo.com

MBC

**WELL LOGGING & LEASING
UNMANNED GAS DETECTORS
MUD LOGGING
CERTIFIED INSTRUMENT TECH**

AUSTIN GARNER MARLA GARNER

**24-HOUR PHONE (620) 873-2953
MEADE, KANSAS**



FULL LINE SUPPLY STORE
With Pump Shop, New & Used Pipe,
Equipment and Fittings
Exclusive S-55 casing source

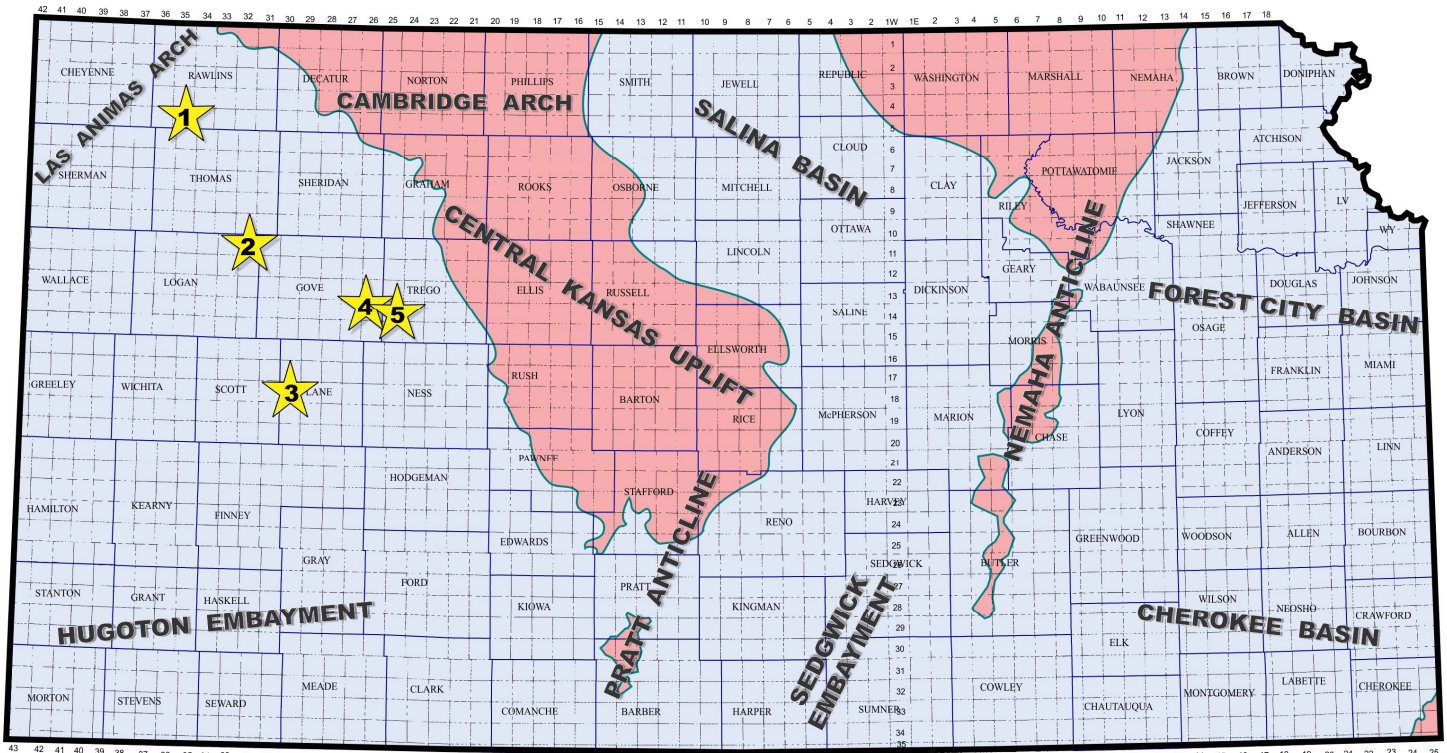
STORES:

Chanute, KS	620-431-6500	Ness City, KS	800-589-5733
El Dorado, KS	316-321-9323	Osawatomie, KS	913-755-2297
Garden City, KS	877-976-1700	Spivey, KS	620-532-5261
Hays, KS	785-650-0199	Trenton, NE	308-344-5426
Hugoton, KS	620-428-6604	Brighton, CO	303-659-4934

SALES OFFICE:
Wichita, KS 800-777-7672

Exploration Highlights

By John H. Morrison, III
Independent Oil & Gas



1-Culbreath Oil & Gas Company, Inc., Tulsa (OK), has discovered two new oil fields in Northwest Kansas. First, #1-4 Otis P. Dewey Trust well, spotted in the SE/4 of section 4- T 5s - R 35W in southwestern **Rawlins** County, has discovered deposits of crude oil in the Marmaton limestone. The well was drilled to a total depth of 4,822 ft by WW Drilling tools, about nine miles south and six miles east of the town of McDonald, Kansas. Discovery was made nearly six miles southeast of the FCC Field (estbl: 2015, Marmaton oil), which was established by Samuel Gary Jr. and Associates, Inc. earlier this year.

2 -Elsewhere in **Logan** County, Culbreath's # 1-28 H. Dreiling Trust is pumping an unknown amount of crude oil from the Lansing - Kansas City formation. The well was drilled to a logger's total depth of 4,804 ft in the SW/4 of section 28- T 11s- R 32W. The wildcat well found the new oil reserves deposited over three-quarters mile west of the Hockersmith Field, which was recently opened by New Gulf Operating LLC. The field has yielded over 12,000 barrels of oil since January last year with pay coming from both the L-KC and Cherokee formations. Culbreath's latest two discoveries makes six new oil fields discovered in the State since exploration began in 2011.

3-Larson Operating Company, Inc., Olmitz (KS), has successfully completed their #1-15 Schoepf in **Lane** County. The wildcat well opens a new unnamed oil field in the NW/4 of section 15- T 18s- R 30W, or twelve miles north and one mile west of the town of Amy, Kansas. Operator perforated the Lansing - Kansas City and Marmaton limestone formations to recover the oil. H D Drilling tools drilled the well to a rotary total depth of 4,600 ft. Exploration focused on an area over three-quarters mile southwest of the Sharp Seed South oil field which Larson established in late 2012. Two wells in the Sharp Seed

South Field together have produced nearly 17,000 barrels of oil from the L-KC, Marmaton and Cherokee formations.

4-Carmen Schmitt, Inc., Great Bend (KS), is producing an undisclosed amount of crude oil from the Lansing - Kansas City formation at the #1-12 Lipp - Harvey. Located in the SE/4 of section 12- T 14s- R 26W in **Gove** County, the new pool discovery well was drilled to a total depth of 4,440 ft utilizing tools provided by Murfin Drilling Company. Discovery was made about fifteen miles south and four miles east of Quinter, Kansas. Site lies nearly three miles northeast of nearest established production in the Nibla Field (estbl: 1990, Mississippian oil) and is over three and one half miles from closest known L-KC production in the vicinity.

5-Phillips Exploration Company LC, Andover (KS), has established a new oil field in **Trego** County with the completion of the #1-6 Purinton - Werth Unit. The new unnamed pool is producing crude oil from the Lansing - Kansas City zones at site located in the SE/4 of section 6- T 14s- R 25W, about twelve miles south and one mile west of Collyer, Kansas. The well was drilled to a total depth of 4,380 ft. Closest recognized production lies nearly two miles away in the Rosemary Field - a field Phillips Exploration also discovered in November last year in section 20. The #1-SHR Rosemary pool discovery well was completed for 40 barrels of oil per day from L-KC perforations around 3,900 ft in depth. The field currently has four oil producers and has given up over 27,000 barrels of oil to date.



Note: A special thank-you goes out to Marc Summervill at Woolsey for creating these great maps for the Exploration Highlights!

Highlights of the KGS Clay Shoot



Crowd shots: Kent Crisler and Larry Richardson handing out prizes.



Rick Saenger calling out the winning tickets.

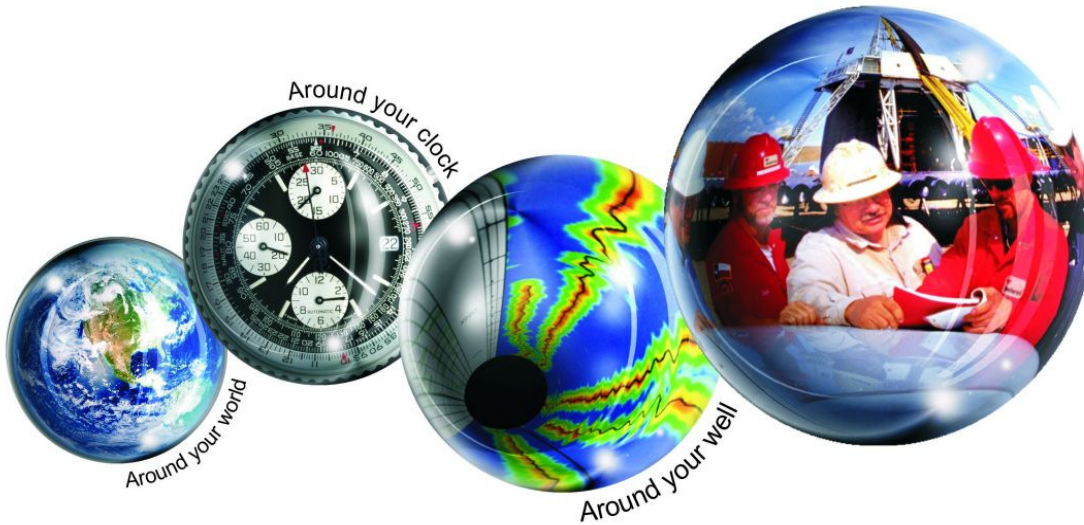


Steve Carl being presented the pistol he won in a special contest sponsored by Lone Star Geophysical Surveys.



Kansas Geological Foundation Memorials

KGS Member	Date Deceased	Memorial Est.	KGS Member	Date Deceased	Memorial Est.
Dan Bowles	09/89	1990	Claud Sheats	02/02	2002
John Brewer	10/89	1990	Merle Britting	2002	2002
George Bruce	08/89	1990	Harold Trapp	11/02	2002
Robert Gebhart	01/90	1990	Donald M. Brown	11/02	2003
Ray Anderson, Jr.	11/90	1990	Elwyn Nagel	03/03	2003
Harold McNeil	03/91	1991	Robert Noll	09/03	2003
Millard W. Smith	08/91	1991	Benny Singleton	09/03	2003
Clinton Engstrand	09/91	1991	Jay Dirks	2003	2003
M.F. "Ted" Bear	10/91	1991	J. Mark Richardson	02/04	2004
James & Kathryn Gould	11/91	1991	John "Jack" Barwick	02/01	2004
E. Gail Carpenter	06/91	1993	Richard Roby	03/04	2004
Benton Brooks	09/92	1992	Ruth Bell Steinberg	2004	2004
Robert C. Armstrong	01/93	1993	Gordon Keen	03/04	2004
Nancy Lorenz	02/93	1993	Lloyd Tarrant	05/04	2004
Norman R. Stewart	07/93	1993	Robert J. "Rob" Dietterich	08/96	2004
Robert W. Watchous	12/93	1993	Mervyn Mace	12/04	2004
J. George Klein	07/94	1994	Donald Hoy Smith	04/05	2005
Harold C.J. Terhune	01/95	1995	Richard M. Foley	06/05	2005
Carl Todd	01/95	1995	Wayne Brinegar	06/05	2005
Don R. Pate	03/95	1995	Charles B. Moore	09/96	2005
R. James Gear	05/95	1995	Jack Heathman	05/06	2006
Vernon Hess	06/95	1995	Charles Kaiser	09/06	2006
E. K. Edmiston	06/95	1995	Rod Sweetman	08/06	2006
Jack Rine	07/95	1995	Karl Becker	10/06	2006
Lee Cornell	08/95	1995	Frank Hamlin	10/06	2006
John Graves	10/95	1995	Marvin Douglas	12/06	2006
Wilson Rains	10/95	1995	Robert W. Hammond	04/07	2007
Heber Beardmore, Jr.	09/96	1996	Eldon Frazey	04/07	2007
Elmer "Lucky" Opfer	12/96	1996	Pete Amstutz	05/07	2007
Raymond M. Goodin	01/97	1997	Charles Spradlin	05/07	2007
Donald F. Moore	10/92	1997	Donald R. "Bob" Douglass	09/07	2007
Gerald J. Kathol	03/97	1997	Vincent Hiebsch	11/07	2007
James D. Davies	08/88	1997	Glen C. Thrasher	03/08	2008
R. Kenneth Smith	04/97	1997	Peg Walters	06/08	2008
Robert L. Dilts	05/97	1997	Theodore "Ted" Sandberg	07/08	2008
Delmer L. Powers	06/72	1997	James Ralstin	11/08	2008
Gene Falkowski	11/97	1997	Earl Brandt	04/09	2009
Arthur (Bill) Jacques	01/98	1998	Walter DeLozier	05/09	2009
Bus Woods	01/98	1998	Don D. Strong	01/10	2010
Frank M. Brooks	03/98	1998	John Stone	02/10	2010
Robert F. Walters	04/98	1998	Craig Caulk	03/10	2010
Stephen Powell	04/98	1998	Joseph E. Moreland, Jr.	03/10	2010
Deane Jirrels	05/98	1998	Gene Garmon	03/10	2010
William G. Iversen	07/98	1998	James F. Dilts	05/10	2010
Ann E. Watchous	08/98	1998	Jerry Pike	05/10	2010
W.R. "Bill" Murfin	09/98	1998	Donald Hollar	06/10	2010
Donald L. Hellar	11/98	1998	Delbert Costa	08/10	2010
Joseph E. Rakaskas	01/99	1999	John Tanner	08/10	2010
Charles W. Steincamp	02/99	1999	William (Bill) Owen	09/10	2010
Robert and Betty Glover	10/96	1998	Harold (Hal) Brown	10/10	2010
Howard E. Schwerdtfeger	11/98	1999	Edmund G. Lorenz	11/10	2010
W. W. "Brick" Wakefield	03/99	1999	Thomas E. Black	05/11	2011
V. Richard Hoover	01/00	2000	Wayne E. Walcher	07/11	2011
Warren E. Tomlinson	01/00	2000	Henry F. Filson	07/11	2011
James A. Morris	01/00	2000	Thomas Ray	07/11	2011
Eric H. Jager	03/00	2000	Edgar E. Smith	09/11	2012
Kenneth W. Johnson	03/00	2000	Marilyn Messinger	06/13	2013
Dean C. Schaake	03/00	2000	Micheal Mitchell	09/13	2013
Fred S. Lillibridge	05/00	2000	Orvie Howell	11/13	2013
Jerry A. Langrehr	07/00	2000	James Thompson	11/13	2013
Clark A. Roach	07/00	2000	Dick Rowland	09/13	2014
Floyd W. "Bud" Mallonee	10/00	2000	Robbie Thompson	12/13	2014
Ralph W. Ruuwe	09/00	2000	Kris Kennedy	04/14	2015
Robert L. Slamal	02/01	2001	Annette Hedke	02/15	2015
Jerold E. Jespersen	06/01	2001	James Devlin	04/15	2015
William A. Sladek	06/01	2001	Robert Gensch	09/15	2015
Harlan B. Dixon	06/01	2001			
Edward B. Donnelly	08/01	2001			
Richard P. Nixon	02/02	2002			
Robert W. Frensley	12/01	2002			
Gerald W. Zorger	01/02	2002			
Don L. Calvin	03/02	2002			



All Around You

Weatherford has always been driven by your needs.

Now, with the addition of Precision Energy Services we're continuing to build a world of skills, services and technologies that revolve – and evolve – around you.

The result?

An expanded global network of 25,000 people, 730 service bases and 87 manufacturing facilities in 100 countries.

This increased local knowledge and service is there to support you anywhere, anytime. From midday in the Middle East to midnight in the middle of nowhere.

And with greatly strengthened capabilities in the critical evaluation skills of directional drilling and wireline logging, we can do even more to improve the profitability and productivity of your wells.

To see how our sphere of services can work for you, visit www.weatherford.com or contact either your Weatherford or former Precision Energy Services representative.

Drilling | Evaluation | Completion | Production | Intervention

© 2006 Weatherford International Ltd. All rights reserved. Incorporates proprietary and patented Weatherford technology.

CHANGE SERVICE REQUESTED

KGS BULLETIN
 November—December 2015

November 2015

Sun	Mon	Tue	Wed	Thu	Fri	Sat
1	2	3	4	5	6	7
8	9	10 KGS Board Mtg.	11 KGF Board Mtg.	12	13	14
15	16 Tech Talk	17	18	19	20	21
22	23	24	25	26	27	28
				Library Closed Thanksgiving		
29	30					

December 2015

Sun	Mon	Tue	Wed	Thu	Fri	Sat
		1	2	3	4	5
6	7	8 KGS Board Mtg.	9 KGF Board Mtg.	10	11	12
13	14	15	16	17	18	19
20	21	22	23	24	25	26
				Library Closed Christmas		
27	28	29	30	31		
				Library Closed New Years		